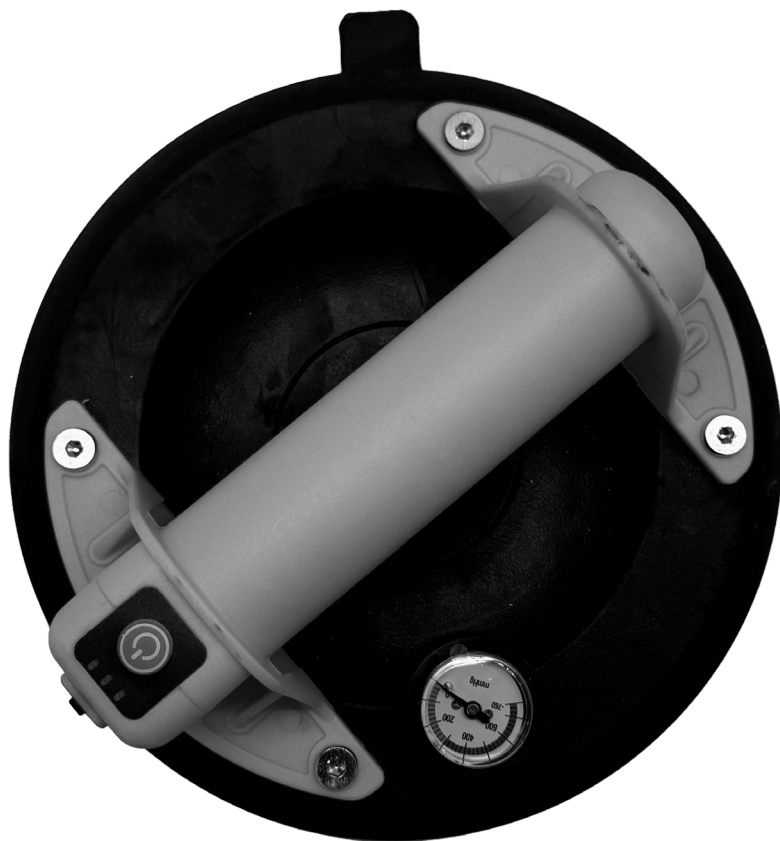




Instruction Manual



PowerLift Glass Lifter

Read before use



SPECIFICATIONS

Part code :	XSC10000
Vertical suction	130kg
Suction cup diameter	198mm
Handle length	110mm
Rated voltage	D.C. 3.7 V - 4.2 V
Charging duration	2h
Rated power	3W
Net weight	1kg
Service time under normal conditions	8 h >

- Due to our continuing program of research and development, the specifications herein are subject to change without notice.
- The normal working condition refers to the repeated cycle of creating and releasing vacuum when the suction cup is held against a smooth surface. Weight, with battery cartridge, according to EP-TA-Procedure 01/2003.

Charger	DC4.2RA/DC4.2RB
---------	------------------------

- The applicability of the chargers listed above varies depending on the user's region.
- ⚠ CAUTION** Only use genuine charging cable. Use of non-genuine charging cable can cause the battery to explode, potentially resulting in fires, personal injury and damage.

SAFETY WARNINGS

General power tool safety



WARNING: Read all safety warnings, instructions, illustrations and specifications provided with this power tool. Failure to follow all instructions listed below may result in electric shock, fire and/or serious injury.

Save all warnings and instructions for future reference. The term "power tool" in the warnings refers to your mains-operated (corded) power tool or BATTERY-operated (cordless) power tool.

Work area Safety

1. **Keep work area clean and well lit.** Cluttered or dark work areas can increase the risk of accidents.
2. **Do not operate power tools in explosive atmospheres, such as in the presence of flammable liquids gases or dust.** Power tools create sparks which may ignite the dust or fumes.
3. **Keep children and bystanders away while operating a power tool.** Distractions can cause you to lose control.

Electrical Safety

1. **Power tool plugs must match the outlet. Never modify the plug in any way. Do not use any adapter plugs with earthed (grounded) power tools.** Unmodified plugs and matching outlets will reduce risk of electric shock.
2. **Avoid body contact with earthed or grounded surfaces such as pipes, radiators, ranges and refrigerators.** There is an increased risk of electric shock if your body is earthed or grounded.
3. **Do not expose power tools to rain or wet conditions.** Water entering a power tool will increase the risk of electric shock.
4. **Do not abuse the cord. Never use the cord for carrying, pulling or unplugging the power tool. Keep cord away from heat, oil, sharp edges and moving parts.** Damaged or entangled cords increase the risk of electric shock.
5. **When operating a power tool outdoors, use an extension cord suitable for outdoor use.** Use of a cord suitable for outdoor use reduces the risk of electric shock.
6. **If operating a power tool in a damp location is unavoidable, use a ground fault circuit interrupter (GFCI) protected supply.** Use of a GFCI reduces the risk of electric shock.
7. **Power tools can produce electromagnetic fields (EMF) that are not harmful to the user.** However, users of pacemakers and other similar medical devices should contact the maker of their device and/or doctor for advice before operating this power tool.

Personal Safety

1. **Stay alert, stay focused and avoid distractions** when operating a power tool. **Never use power tools while tired or under the influence of drugs, alcohol or medication.** A moment's lapse in attention can lead to serious personal injury.
2. **Use personal protective equipment. Always wear eye protection.** Protective equipment such as dust protection will reduce personal injuries.
3. **To prevent accidental operation, always ensure the power switch is in the off position before connecting the tool to a power source or battery pack.** Additionally, avoid carrying the tool with your finger on the power switch, as this significantly increases the risk of unintended activation and potential injury.
4. **Remove any adjusting key or wrench before turning the power tool on.** A wrench or a key left attached to a rotating part of the power tool may result in personal injury.
5. **Do not overreach. Keep proper footing and balance at all times.** This enables better control of the power tool in unexpected situations.
6. **Dress appropriately. Do not wear loose clothing or jewellery.** Keep your hair, clothing and gloves away from moving parts to avoid becoming entangled.
7. **If your equipment includes dust extraction and collection facilities, ensure they are properly connected and used to minimise dust-related hazards.**
8. **Don't let familiarity lead to complacency. Always follow safety recommendations when using this tool.** A moment of carelessness can lead to severe injury.

PowerLifter safety warnings

1. **Do not lift objects that are too large to be handled safely and controlled.**
2. **Do not exceed maximum lifting weight.**
3. **Before operation, please check you have enough room around the workpiece to avoid touching the floor or workbench during handling.**

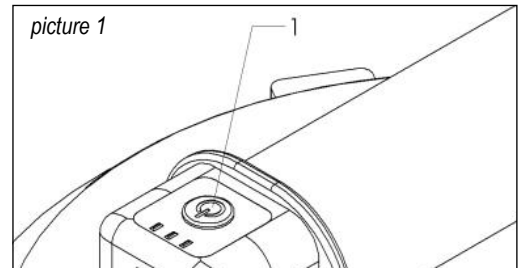
4. **Please hold the tool firmly.**
5. **Before lifting, make sure the suction cup is in full contact with the surface of the workpiece.**
6. **Do not set the tool down while in operation. It must be held at all times.**
7. **Only operate the tool when lifting a load.**

Use and precautions of electric suction cup

1. **If the power switch is malfunctioning, the suction cup cannot be operated.**
2. **Keep this PowerLifter away from children.** Only individuals who are familiar with its functions and have reviewed these instructions should operate this device. Untrained use can lead to injury.
3. **Keep the handle and holding surface dry, clean and free of grease.** A slippery handle can compromise safety and control.
4. **Follow all charging instructions. Do not charge the battery pack or power tools outside the temperature range specified in the manual.**

Functional Description

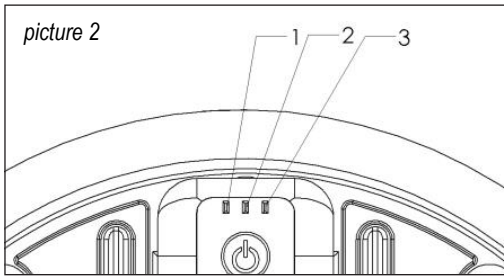
Switch action



1. ON/OFF switch

To activate suction mode, press and hold the switch button for more than 2 seconds.

picture 2



1. **Suction indicator**
2. **Release indicator**
3. **Working status indicator**

After entering the suction mode normally, the suction indicator lights up and the suction motor works.

Once the suction pressure reaches the required level, the working status indicator will illuminate. The suction motor will then cycle on and off to maintain this pressure.

If the working status indicator flashes, the battery is low. Please charge immediately.

NOTE: The suction indicator light shows the status of the suction motor.

Release and reapply vacuum

While in suction mode, double-click the ON/OFF switch to release vacuum. The vacuum release indicator light will turn on. Once the pressure is fully released, the indicator light will turn off.

NOTE: The release indicator light shows the working status of the release valve.

While in vacuum release mode, click the ON/OFF switch to start suction. The suction indicator light will turn on. Once the target holding pressure is achieved, the working status indicator will turn on. The suction motor will cycle intermittently to maintain the working pressure.

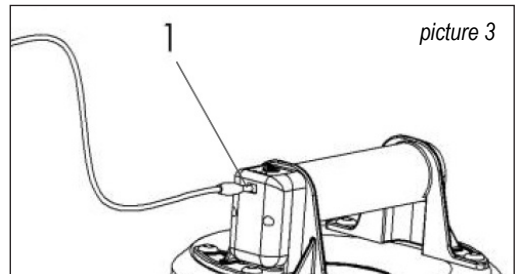
Shutdown

In suction mode, press and hold the ON/OFF switch for more than 2 seconds to shut down. In vacuum release mode, the unit will enter sleep mode after 10 minutes of inactivity. To resume operation, a restart is necessary.

Charging and battery protection

1. If the working status indicator flashes upon start-up, the battery is low. Please charge the unit immediately.
2. If the PowerLift hasn't been used for an extended period, the battery may lose charge and won't power up. To avoid this, it is recommended to charge the unit every six months.
3. To prevent overheating, avoid continuous use of the unit for more than 3 hours. Extended use may trigger the battery's temperature protection system, causing the unit to shut down.

NOTE: Red light: Charging.
Green light: Battery full.



picture 3

1. **Charging indicator**

Operation

1. Clean the surface of the object to be lifted.
2. Ensure the suction cup base plate is clean and undamaged.
3. Place the suction cup firmly on the object's surface. Activate the suction mode to create a vacuum seal.
4. Ensure the vacuum indicator is within the safe range. Lift and maneuver the object.
5. Release the object by activating the vacuum release mode.

WARNING: Do not use harsh chemicals like gasoline, benzene, thinners, alcohol or similar substances to clean as this may damage the device.